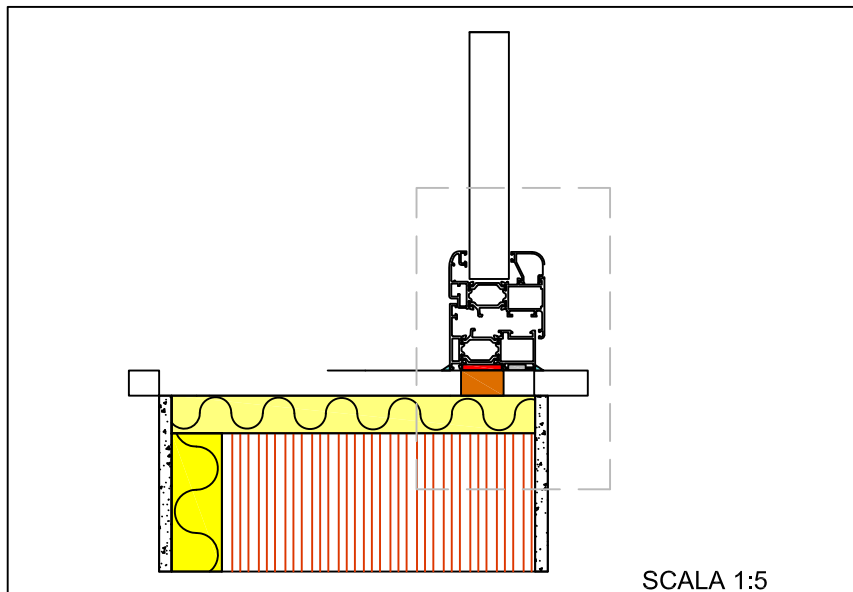





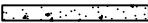



SCHEDA DI POSA

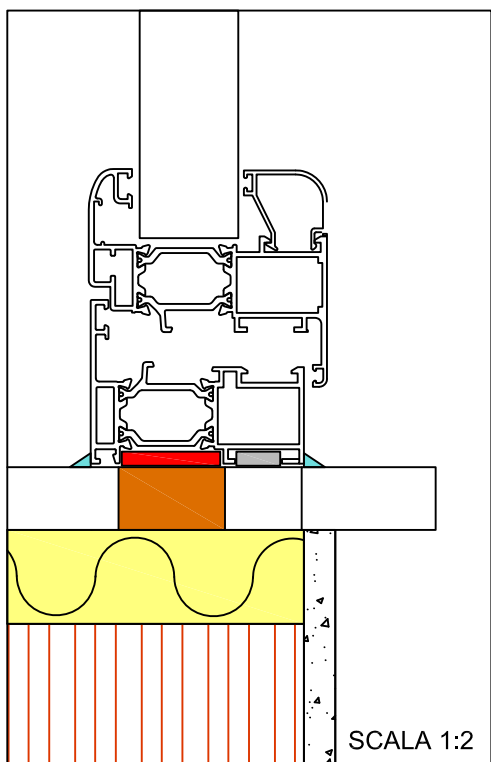
COD. XXXXXXXXXXXX



SCALA 1:5

LEGENDA

-  guarnizione
-  nastro espandente
-  poroton
-  intonaco
-  xps
-  silicone
-  legno

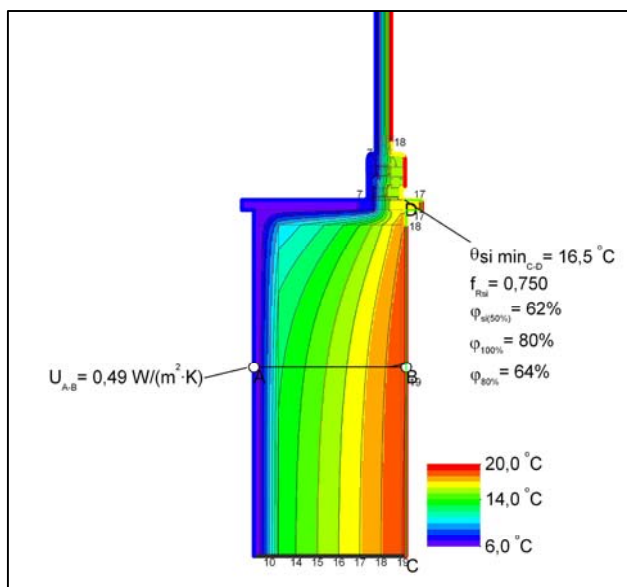


SCALA 1:2

Temperatura Superficiale
Minima: 16.5°C

Trasmittanza termica
lineica giunto di posa: 0.16 W/(mK)

NOTE



La temperatura utilizzata é pari a 6,0 C° che equivale alla temperatura media del mese più freddo (Gennaio) nella località di progetto: Ischia.